



NOTICE OF PUBLIC MEETING

JOINT MEETING BETWEEN CITY COUNCIL AND THE PARKS, ARTS, AND RECREATION COMMITTEE

NOTICE IS HEREBY GIVEN that the City of Arlington City Council and the Parks, Arts, and Recreation Commission will hold a Joint Public Meeting on the Smokey Point Community Park and Proposed Park Amenities. The purpose of the Meeting is to have a public input and discussion regarding the park amenities that will be provided in the park.

Date of Joint Public Meeting: Monday, May 22, 2023

Time of Joint Public Meeting: 5:00 pm

Location of Joint Public Meeting: City Council Chambers, 110 East Third Street, Arlington, WA 98223

Project Name: Smokey Point Community Park

Description of Proposed Project: The Smokey Point Park is a proposed new community park that is located at the northeast corner of the Smokey Point Boulevard and 178th Place intersection. The property is listed under tax parcel number 31052100302300 and is approximately 2.23 acres in size. The park is currently under design and the city is looking for feedback and suggestions from the public regarding the amenities that will be placed within the park. A copy of the Smokey Point Park layout and design is attached to this notice and can also be viewed on the City of Arlington's website, under public notices, Smokey Point Community Park Joint Public Meeting Notice: <https://www.arlingtonwa.gov/310/Public-Notices-Hearings>.

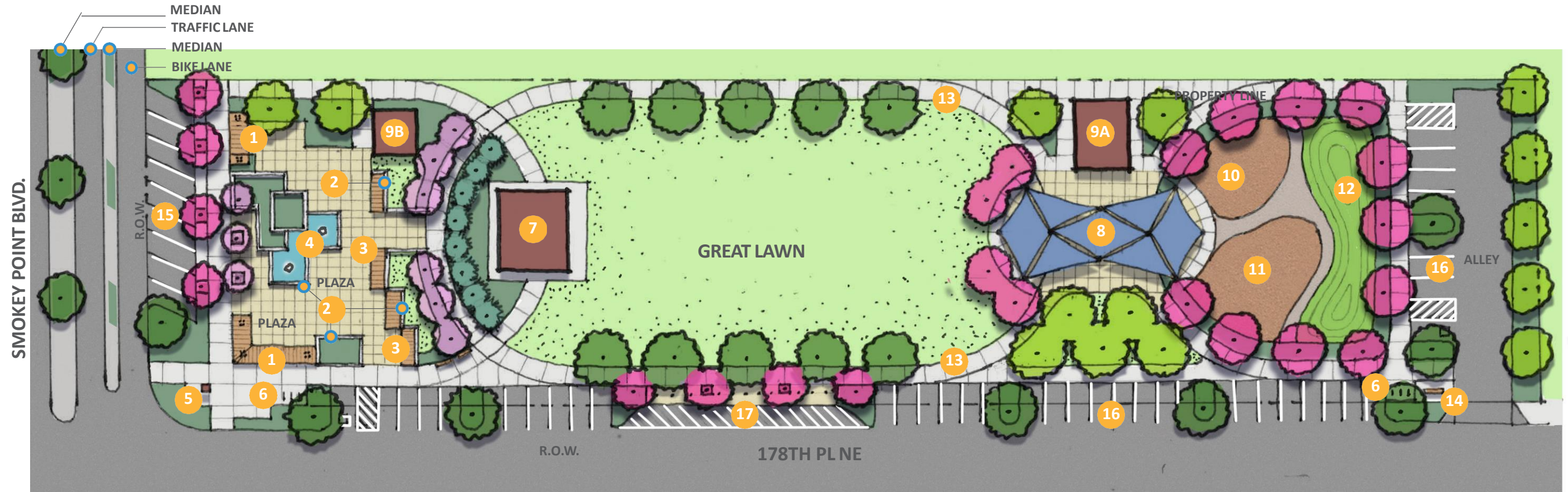
City Staff Contact: Marc Hayes, CED Director, mhayes@arlingtonwa.gov

Project Review: Any interested person may review Smokey Point Park layout and design during normal business hours (8:00a.m. to 5:00p.m. closed 12:00 pm to 1:00 pm, Monday – Friday) at the Community and Economic Development Department (Arlington Municipal Airport Office Building), 18204 59th Avenue NE, Arlington, WA 98223.

Special Accommodations: The City of Arlington strives to provide accessible meetings for people with disabilities. Please contact the ADA Coordinator at 360-403-3441 or 1-800-833-8388 (TDD only) prior to a meeting date if special accommodations are needed.

SMOKEY POINT PARK - CONCEPT PLAN

SMOKEY POINT BLVD. AND 178TH PL NE



LEGEND

- | | | | |
|----|---|----|---------------------------------|
| 1 | TRELLIS GATEWAY WITH INTEGRAL PARK SIGN | 9B | RESTROOM BUILDING |
| 2 | SEAT WALLS | 10 | AGE 2-5 PLAYGROUND |
| 3 | SHADE TRELLIS | 11 | AGE 5-12 PLAYGROUND |
| 4 | WATER FEATURE WITH TWIN "SMOKE STACK" CASCADING WATER COLUMNS | 12 | SYNTHETIC TURF PLAY MOUND |
| 5 | ENTRY PILLAR/SCULPTURE | 13 | CONCRETE SIDEWALK |
| 6 | BIKE RACKS | 14 | PARK SIGN |
| 7 | COVERED PERFORMANCE STAGE | 15 | BACK-IN ANGLE PARKING |
| 8 | PLAZA WITH SEATING AND SHADE SAILS | 16 | 90 DEGREE PARKING |
| 9A | RESTROOM/CONCESSION BUILDING | 17 | LOADING AREA/FOOD TRUCK PARKING |

Concept

- The park concept is based on two key local historical places of interest: Nearby Rex's Corner, location of the Smoky Point Cafe, for which the local community is named; and the old oval horse track for which the local Pony Estates neighborhood is named.
- Rex's Corner was one of several named "corners" in Snohomish County and was a key rest stop for road trips in the 1920's - 1960's with its restaurant, tavern and gas station. The plaza entry trellises and rectilinear layout with several corners hearken back to the original Rex's corner architecture and establish a strong corner visually.
- A twin vertical 'smoke stack' water feature in the plaza with water flowing out the top of each column recalls the Smoky Point Cafe with its chimneys and the barbecue smoke they sent out.
- The plaza 'back yard' provides opportunities for recreation and special events and recalls how Rex loved sports and allowed 10-acre property behind his restaurant to be converted to a baseball field.
- The more formal oval layout of the "Great Lawn" and perimeter walking path recall the now vanished oval horse track. The covered performance stage with its adjacent berm and formal arc of trees provides a formal focal point for this large gathering and activity space and a backdrop for the entry plaza.
- Additional gathering and activity spaces including shaded picnic plaza, playground, and restroom/concession building anchor the east end of the park.
- 50 total parking stalls (48 standard + 2 disabled)