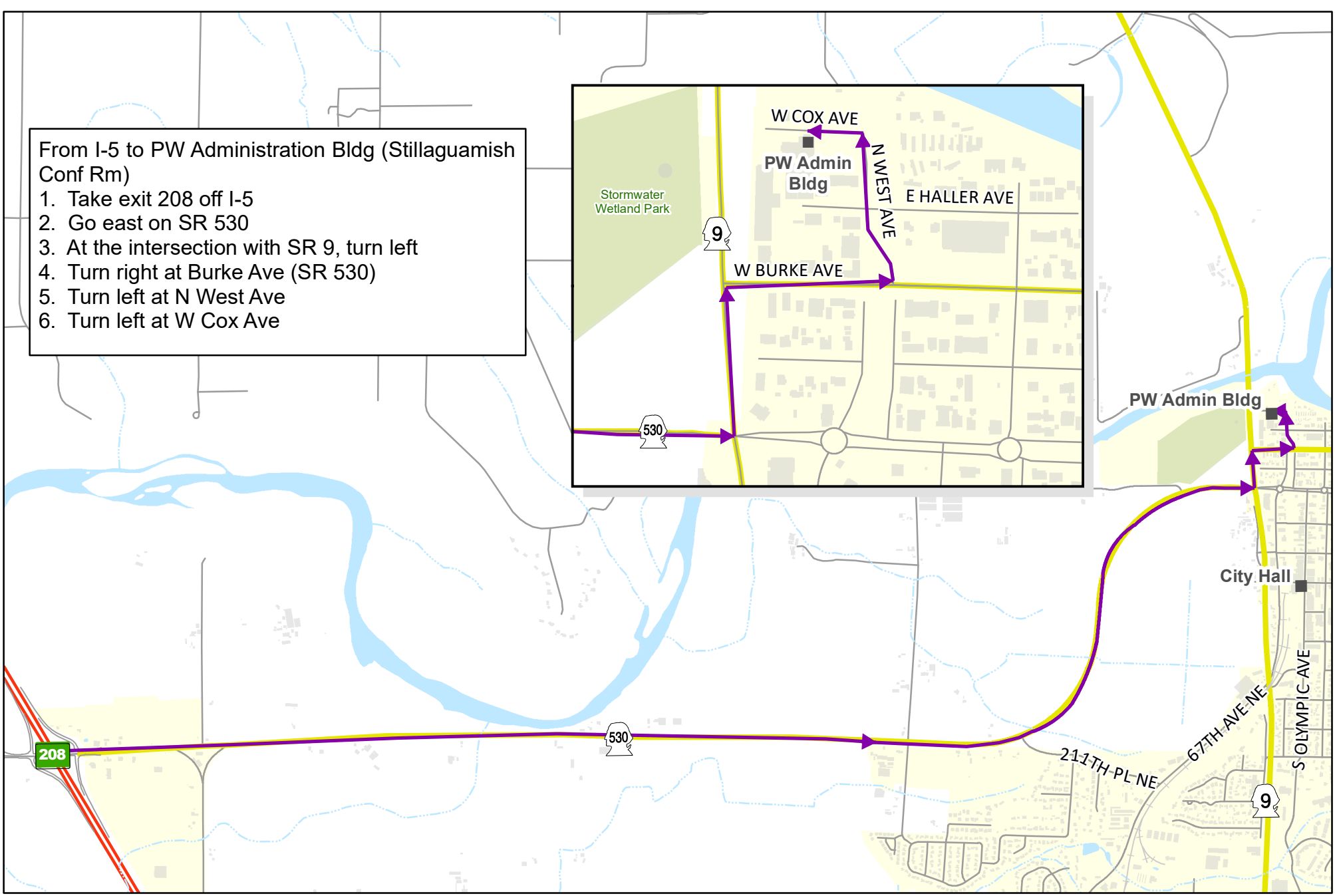
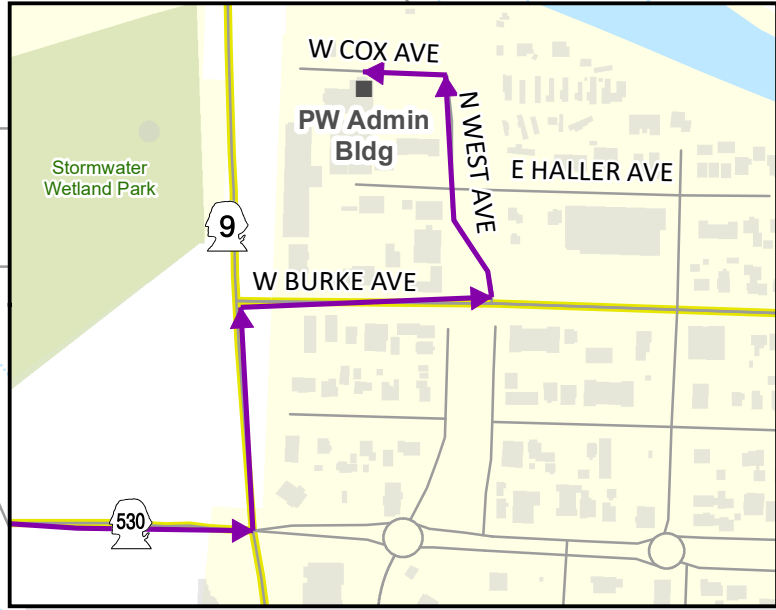


From I-5 to PW Administration Bldg (Stillaguamish Conf Rm)

1. Take exit 208 off I-5
2. Go east on SR 530
3. At the intersection with SR 9, turn left
4. Turn right at Burke Ave (SR 530)
5. Turn left at N West Ave
6. Turn left at W Cox Ave



Legend

- Roads
- Waterbodies
- State Routes
- Parks
- I-5
- Buildings
- Streams
- City limits

Maps and GIS data are distributed "AS-IS" without warranties of any kind, either express or implied, including but not limited to warranties of suitability for a particular purpose or use. Map data are compiled from a variety of sources which may contain errors and users who rely upon the information do so at their own risk. Users agree to indemnify, defend, and hold harmless the City of Arlington for any and all liability of any nature arising out of or resulting from the lack of accuracy or correctness of the data, or the use of the data presented in the maps.

City of Arlington
Directional Map

Updated: 7/28/2021